

Proposed Spaces:

1. **HS Art Room** (Large work space):

The high school (HS) art room is located on the 5th floor of the building, and is connected directly to the outdoor terrace. It is approximately 1,343 Sq. Ft. I took art classes in high school, and I think it may be interesting to design the lighting for this space. I am hoping to not only consider general lighting, but also exhibition space for artwork.



2. **Gymnasium** (Special Purpose Space):

The gymnasium, which is located on the 1st floor (**Fig. 1**), is 8,341 Sq. Ft. It has movable partitions splitting the space, as well as trapezoidal shaped windows, which make it an interesting candidate for a daylighting analysis. As the gymnasium will host the schools proms, dances, and possibly fund-raisers, it will provide an outlet to make the lighting design solution more interesting than that of a typical gymnasium.

3. **IS Cafeteria:**

The intermediate school cafeteria, located on the 5th floor is also attached directly to the outdoor terrace (**Fig. 2**). It is 2,630 sq. ft. and is a long narrow space. The challenge here will be to take an ordinary school cafeteria, and make it interesting.

4. **Façade** (Outdoor “Space”):

For my outdoor space, I will focus on the façade of the building. The façade of this building has many sharp edges and interesting shapes which should make it an interesting (and challenging) basis for a lighting design. **Fig. 3** shows how the outdoor terrace (which will be included as part of the façade) sits in relation to the rest of the building.



Fig. 3 An exterior rendering of the building showing the façade, and the relationship of the terrace to the rest of the building. Red arrow indicates main entrance to the building.

One Space, Three Schematic Designs:

Because the façade has interesting shapes and extrusions, there are many ways to approach the lighting design. For that reason, I will use the façade as the basis for which to provide three different schematic design solutions.

Psychological Impressions:

The Intermediate school cafeteria will be the basis for my psychological impressions design. The challenge will be to make this long, narrow cafeteria feel *spacious*.

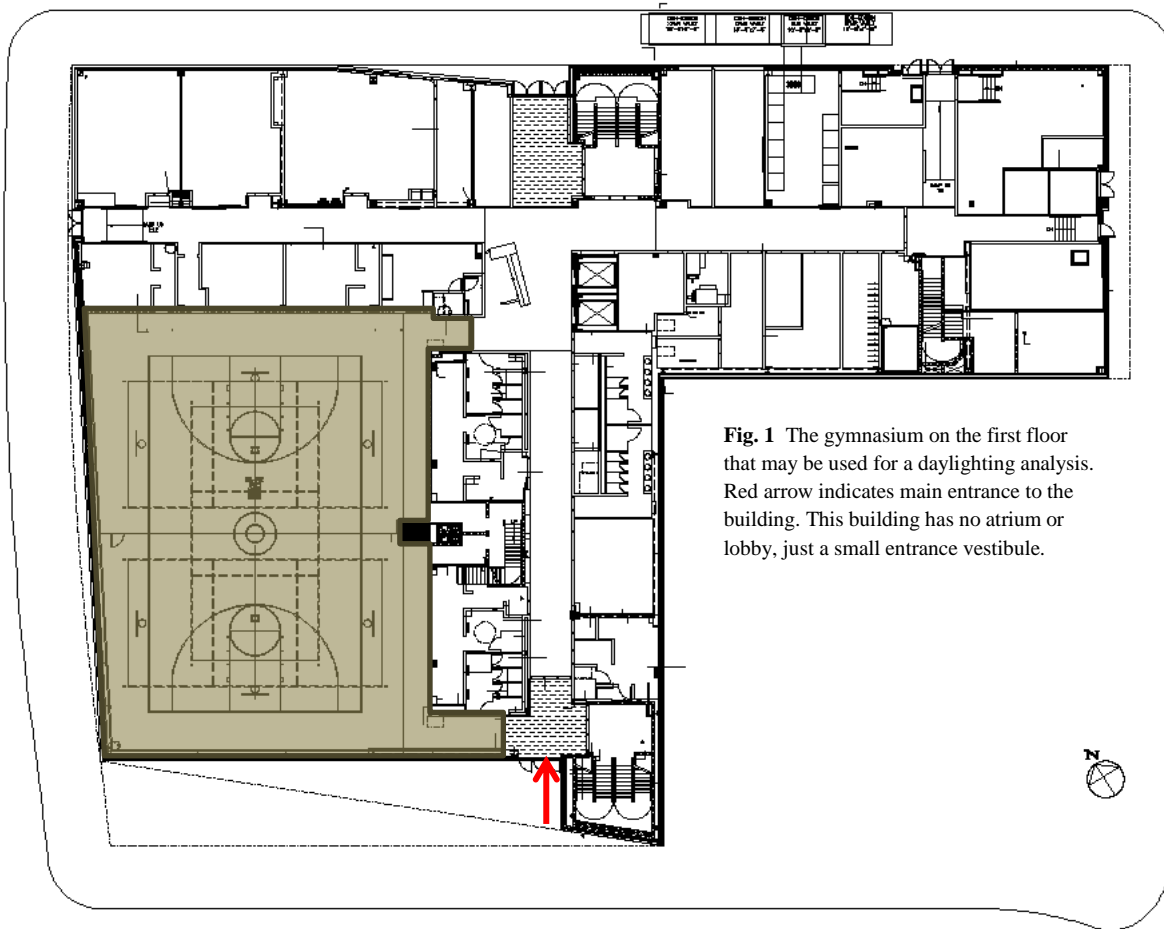


Fig. 1 The gymnasium on the first floor that may be used for a daylighting analysis. Red arrow indicates main entrance to the building. This building has no atrium or lobby, just a small entrance vestibule.

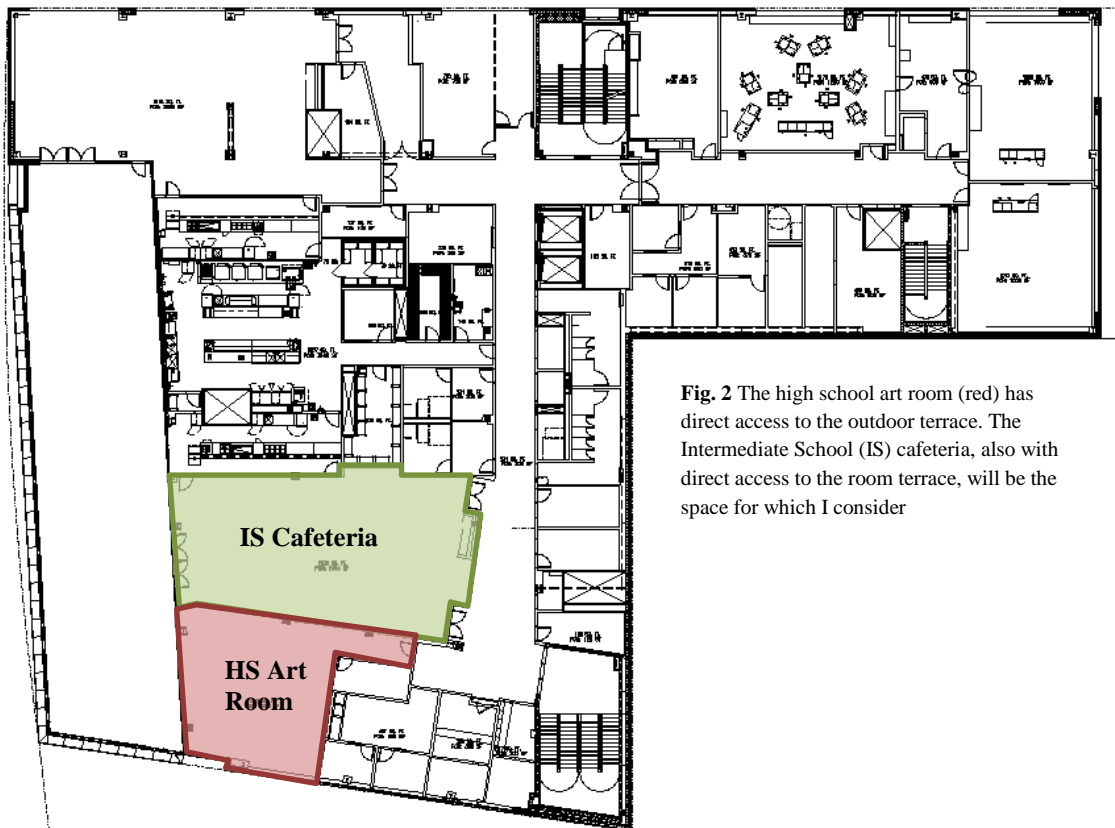


Fig. 2 The high school art room (red) has direct access to the outdoor terrace. The Intermediate School (IS) cafeteria, also with direct access to the room terrace, will be the space for which I consider